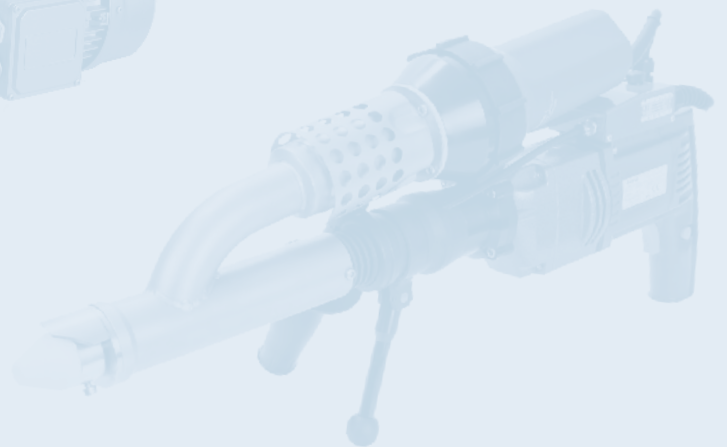
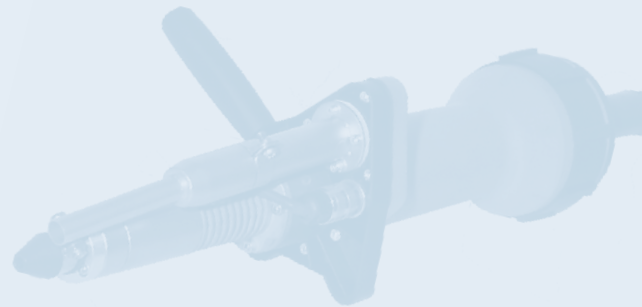
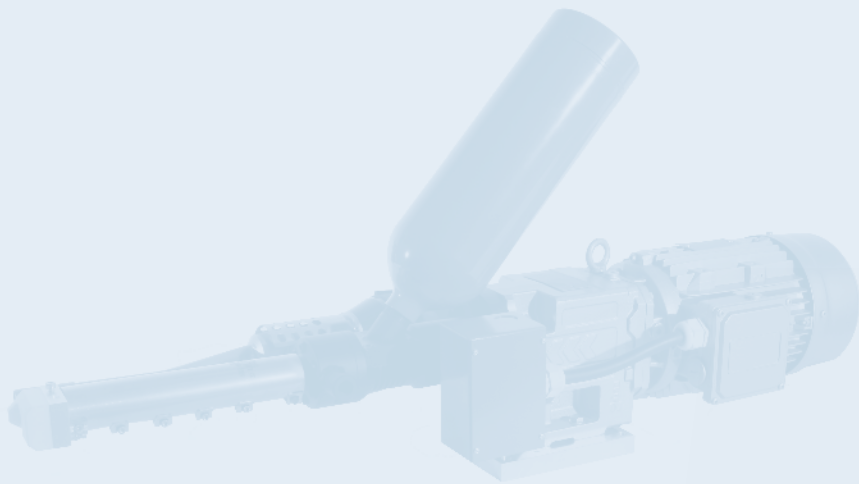


# HEAT ON

## Plastic welding extruder and industrial extruder



# BAK

[www.bak-ag.com](http://www.bak-ag.com)



BAK Technology AG  
Industriestrasse 6  
6064 Kerns / Switzerland

E-Mail [info@bak-ag.com](mailto:info@bak-ag.com)  
Telefon +41 (0)41 661 22 50  
Fax +41 (0)41 661 22 51

*quality  
wins!*

# HEAT ON HIGHLIGHTS OF THE EXTRUDER

- With brushless pre-heater
- The thermocouple is located inside the mass barrel on the outlet, this guarantees a real temperature control and read out
- Cold start protection by mass and air temperature
- Every type is available with a revolving head (360°) with integrated preheat nozzle to weld in any direction
- No wear parts on the rod feed system

For more information  
visit our website

[www.bak-ag.com](http://www.bak-ag.com)

We develop individual  
tool types, especially suited  
for your application.



Hand welding extruder

# MICRO

Small,  
light,  
unique

- for welding of PE, PP, PVDF and PVC
- air and mass temperature can be regulated separately
- internal air supply built-in in the control box
- brushless motor for drive and blower



Worldwide the smallest and lightest hand held extrusion welder. Extruder weight only 2,3 kg, output up to 0,5 kg/h.

#### Technical Data

Voltage	V	230
Frequency	Hz	50/60
Power consumption	W	1300
Output with HDPE material	kg/h	0,1-0,5
Welding consumable	mm	3 and 4 round
Size Extruder (l x w x h)	mm	410 x 75 x 100
Size control box (l x w x h)	mm	530 x 210 x 410
Weight extruder	kg	2,3
Weight control box	kg	20 with 5 m cord
Protection class I		⊕
Markings		CE

# EXON 1/1A

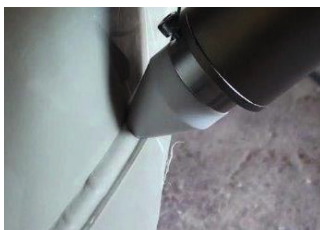
**Handy,  
fail-proof,  
powerful**

- air and mass temperature can be regulated separately (ExOn 1)
- air heated (ExOn 1A)
- 360° rotation of the welding shoe possible
- 2x welding shoes included in your order
- large range of accessories available



ExOn 1 \*\*\*

ExOn 1A \*



Welding is easily possible in tight spaces. The powerful motor and the few electronic components make the extruder fail-proof and durable.

Type		ExOn 1	ExOn 1A
Voltage	V	230 or 120	230 or 120
Frequency	Hz	50/60	50/60
Power consumption	W	2640	2320
Output with HDPE material	kg/h	max. 1,2	max. 1,2
Welding consumable	mm	3 and 4 round	3 and 4 round
Size (l x w x h)	mm	500 x 100 x 340	500 x 100 x 340
Weight	kg	5	5
Pre-heater		brushless	brush
Welding materials		PE, PP, PVDF, PVC	PE, PP
Protection class I		⊕	⊕
Markings		CE	CE

\* air heated hand welding extruder

\*\*\* on request also available with digital read out of the air temperature.



Hand welding extruder

# EXON 2/2A

## Flexible, ergonomic, efficient

- air and mass temperature can be regulated separately (ExOn 2)
- air heated (ExOn 2A)
- 360° rotation of the welding shoe possible (ExOn 2A)
- 2x welding shoes included with order
- optionally for 3 and 4 mm or 4 and 5 mm wire
- large range of accessoires available



ExOn 2



ExOn 2A \*



The compact dimensions and the high output of up to 2 kg/h results in an exceptionally flexible extruder that can be used in many areas.

Type		ExOn 2	ExOn 2A
Voltage	V	230	230
Frequency	Hz	50/60	50/60
Power consumption	W	3600	3100
Output with HDPE material	kg/h	max. 2	max. 2
Welding consumable	mm	4 or 5** round	4 or 5** round
Size (l x w x h)	mm	560 x 120 x 350	560 x 120 x 350
Weight	kg	7	7
Pre-heater		brushless	brush
Welding materials		PE, PP, PVDF, PVC	PE, PP
Protection class I		⊕	⊕
Markings		CE	CE

\* air heated hand welding extruder

\*\* indicate on order

Hand welding extruder

# EXON 3/3A

High quality,  
user-friendly,  
efficient

- air and mass temperature can be regulated separately (ExOn 3)
- air heated (ExOn 3A)
- 2x welding shoes included with order (ExOn 3)
- 1x welding shoes included with order (ExOn 3A)
- price/performance ratio unbeatable
- large range of accessoires available



ExOn 3



ExOn 3A \*



The cost-effective extruder with high performance.

Type		ExOn 3	ExOn 3A
Voltage	V	230	230
Frequency	Hz	50/60	50/60
Power consumption	W	3700	3600
Output with HDPE material	kg/h	max. 3	max. 3
Welding consumable	mm	4 or 5** round	4 or 5** round
Size (l x w x h)	mm	650 x 120 x 360	650 x 120 x 360
Weight	kg	8	8
Pre-heater		brushless	brush
Welding materials		PE, PP, PVDF, PVC	PE, PP
Protection class I		⊕	⊕
Markings		CE	CE

\* air heated hand welding extruder

\*\* indicate on order

Hand held extrusion welder

# EXON C3

Small  
light  
high output



- easy handling
- integrated working light
- high air flow
- perfect for weldings in small spaces



The very compact and economic hand extruder with high performance. The noises are much lower compared with other extruder in the market. Thanks to the integrated working light the overview is never a problem, even in dark corners.

Type		
Voltage	V	230
Frequency	Hz	50/60
Power consumption	W	3500
Output	kg/h	1-3.3
Temperature range mass	°C	150-350
Air flow range	l/min	300-500
Temperature range air	°C	40-450
Noise	dB	75
Size (l x w x h)	mm	500 x 100 x 240
Weight	kg	7,3

# EXON 5/6

**Robust,  
reliable,  
strong**

- for granulat (ExOn 6) or for 5 mm welding wire (ExOn 5)
- 2x welding shoes included with order
- large range of accessories available

ExOn 5



ExOn 6



The extremely powerful extruder guarantees high efficiency. Thanks to its performance and length, it is perfectly suited for civil engineering

Type		ExOn 5	ExOn 6
Voltage	V	230 or 400	230 or 400
Frequency	Hz	50/60	50/60
Power consumption	W	5300	5300
Output with HDPE material	kg/h	max. 5	max. 6
Welding consumable	mm	5 round	pellets
Size (l x w x h)	mm	660 x 126 x 448	660 x 126 x 365/600
Weight	kg	11	12
Pre-heater		brushless	brushless
Welding materials		PE, PP	PE, PP
Protection class I		⊕	⊕
Markings		CE	CE



Heated hose extruder

# HS28

Unique,  
powerful,  
user-friendly

- highest performance
- flexible use due to mobile control box
- brushless motor
- easy operation



The heated hose extruder with the highest welding performance (12 kg/h) on the market. Easy handling due to light weight of the welding head (approx. 6 kg)

#### Technical data

Voltage	V	3x400
Frequency	Hz	50/60
Power consumption	W	11 000
Output	kg/h	max. 12
Welding consumable		pellets
Size (l x w x h)	mm	1040 x 600 x 660
Weight	kg	210
Protection class I		⊕
Markings		CE

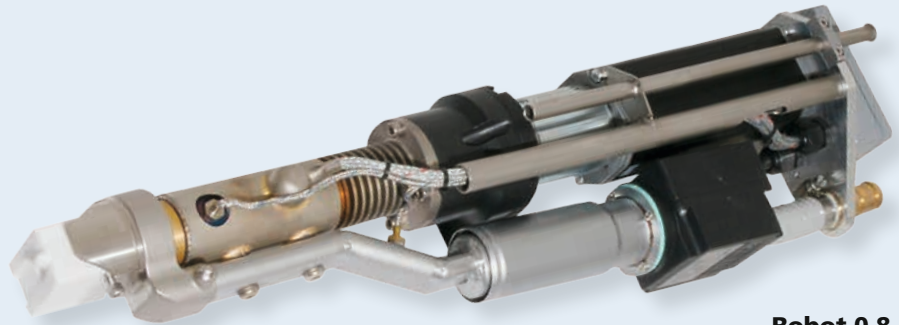
# ROBOT

Small,  
universal,  
innovative

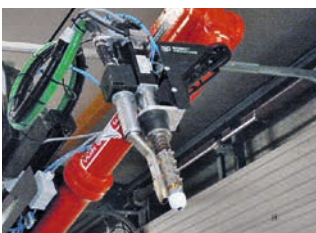
- for automated welding
- for 3D-printing
- light weight
- easy control



**Robot 0,4**  
without preheating



**Robot 0,8**  
with preheating



The small and flexible extruder line to build into automation plants for 3D-printing and plastic welding.

Technical data		Robot 0,4 w/o preheating*	Robot 0,8 w/o preheating	Robot 0,8 with preheating
Voltage	V	230	230	230
Power consumption	W	1500	800	3000
Output	kg/h	max. 0,4	max. 0,8	max. 0,8
Welding consumable		4 round	4 round	4 round
Size (l x w x h)	mm	370 x 100 x 120	540 x 120 x 100	540 x 120 x 180
Weight	kg	2,2	4,9	6,5
Markings		CE	CE	CE
Protection class I		⊕	⊕	⊕

Optional: external control  
\* Version with preheating on request

# EXON 7/8

Reliable,  
fail-proof,  
economical

- for automated welding
- for 3D-printing
- for mounting on robot arms
- easy construction

ExOn 8



ExOn 7



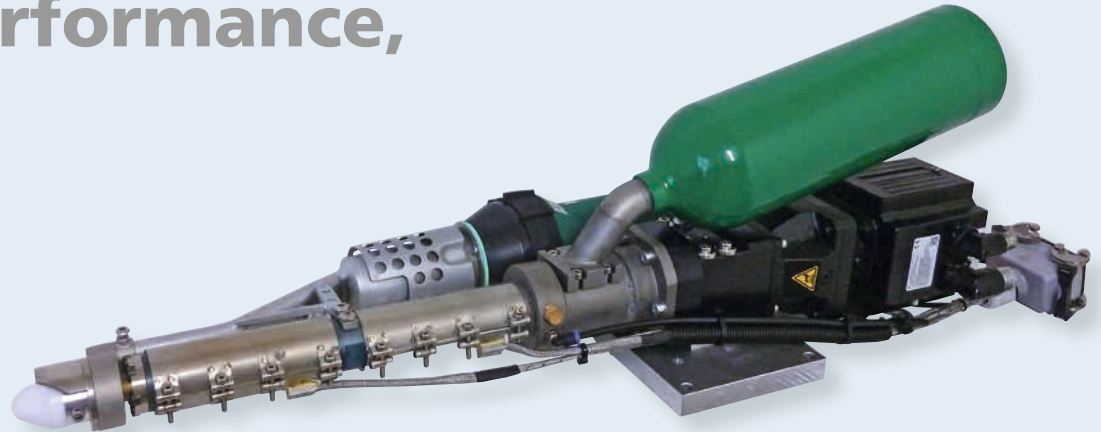
The user-friendly and economic industrial extruders to build into machines or to mount on robot arms.

Technical data		ExOn 7	ExOn 8
Voltage	V	3x400	3x400
Frequency	Hz	50/60	50/60
Power consumption	W	6000	6000
Output	kg/h	max. 5	max. 6
Welding consumable		5 round	pellets
Size (l x w x h)	mm	846 x 267 x 242	852 x 267 x 242 / 430
Weight	kg	40	42
Protection class I		⊕	⊕
Markings		CE	CE

Optional: external control

# EXON 10

High performance,  
light,  
flexible



- for automated welding
- for 3D-printing
- for mounting on robot arms and simple axis systems
- 2 heating zones
- feeder cooling possible
- mounting position variable



The flexible industrial extruder for the work on PE, PP, PVC, TPU, TPE, ABS, PMMA, PA, PC, PET, PLA and many more materials.

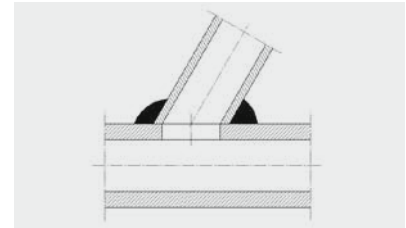
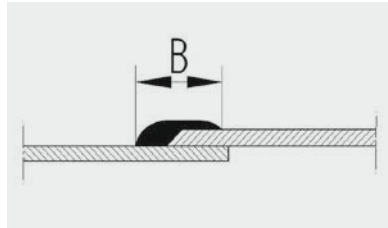
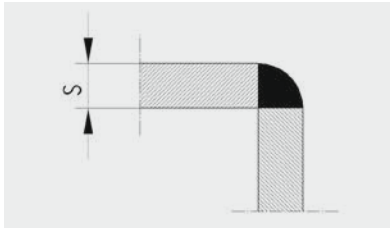
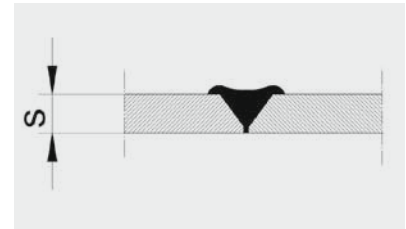
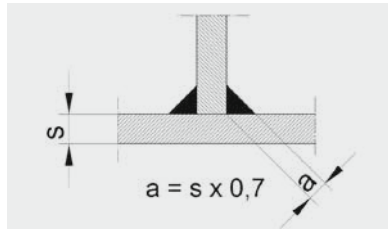
Technical data		
Voltage	V	3x400
Frequency	Hz	50/60
Power consumption	W	5000
Output	kg/h	max. 6
Welding consumable		pellets
Size without preheating (l x b x h)	mm	800 x 300 x 250
Size with preheating (l x b x h)	mm	820 x 300 x 250
Weight with/without preheating	kg	19/22
Protection class I		⊕
Markings		CE

- Optional:
- external control with analogue signal
  - external control with common fieldbus systems
  - nozzle with swerve knife for the cutting of the extrudate
  - feeding for welding rod (2 x 5 mm round) PP and PE



# ACCESSORIES

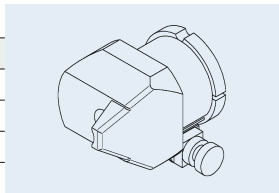
## Welding shoe calculation



## Types Micro/Robot 0,4

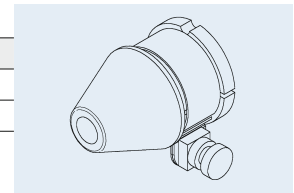
### Welding shoe fillet seam

Order no.	sheet thickness (mm)
D-1175	3-4
D-1176	5-6
D-1177	8
D-1178	10



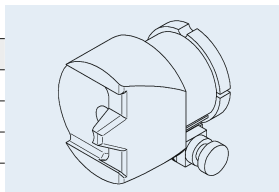
### Welding shoe round

Order no.	
D-1183	∅ 7 mm
D-1184	∅ 9 mm



### Welding shoe V-seam

Order no.	sheet thickness (mm)
D-1179	3-4
D-1180	5-6
D-1181	8



### Nozzle with tacking tip

Order no.
D-1185



### Nozzle

Order no.	
D-1459	∅ 6 mm
D-1463	∅ 9 mm



# ACCESSORIES

## Types ExOn 1–8

### Transport case (metal)

#### Order no.

D-0965	Type ExOn 1
D-1644	Type ExOn 2–3
D-1799	Type ExOn 3A
D-1041	Type ExOn 5–6
D-2683	Type ExOn C3



### Revolving head

#### Order no.

DX321	Type ExOn 2
DX323	Type ExOn 3
DX325	Type ExOn 5–8
DX363	Type ExOn C3



### Revolving head, 45° angle

#### Order no.

DX326	Type ExOn 2
DX327	Type ExOn 2A
DX328	Type ExOn 3
DX330	Type ExOn 5–8



### Revolving head, 90° angle

#### Order no.

DX331	Type ExOn 2
DX332	Type ExOn 2A
DX333	Type ExOn 3
DX335	Type ExOn 5–8

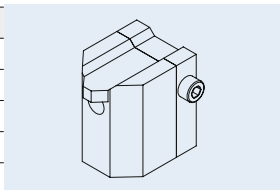


## Welding shoes types ExOn 1/1A

### Fillet seam

#### Order no. sheet thickness (mm)

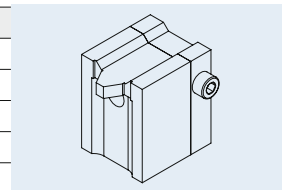
D-0827	5–6
D-0828	8
D-0829	10
D-0830	12
D-1039	15



### V-seam

#### Order no. sheet thickness (mm)

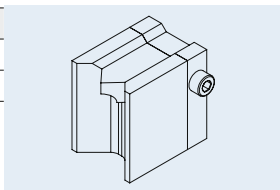
D-0831	5–6
D-0832	8
D-0833	10
D-0834	12



### Corner seam

#### Order no. sheet thickness (mm)

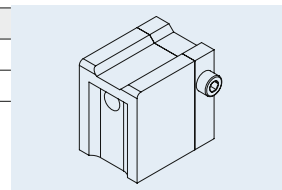
D-0837	5–8
D-0838	10–12



### Overlap seam

#### Order no. seam width (mm)

D-0835	20
D-0836	25



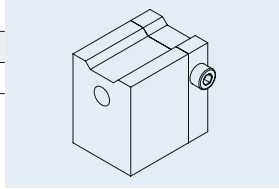
# ACCESSORIES

## Welding shoes types ExOn 1/1A

### Unshaped

#### Order no.

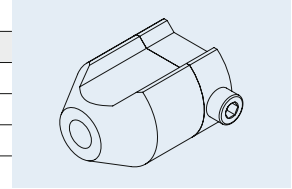
D-0842	lxw 30x40 mm
--------	--------------



### Round

#### Order no.

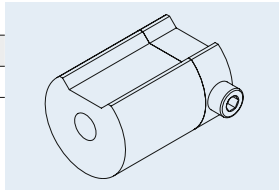
D-0839	∅ 10 mm
D-0840	∅ 15 mm
D-0841	∅ 20 mm



### Unshaped round

#### Order no.

D-0843	∅ 30 mm
--------	---------

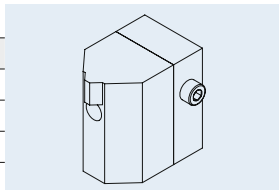


## Welding shoes types ExOn 2-10/Robot 0,8

### Fillet seam

#### Order no. sheet thickness (mm)

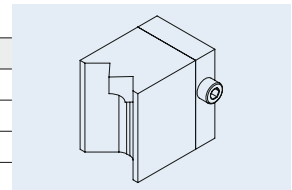
D-0174	5-8
D-0175	10-12
D-0177	15
D-0178	20
D-0179	25
D-0180	30
D-0181	35
D-0182	40



### Corner seam

#### Order no. sheet thickness (mm)

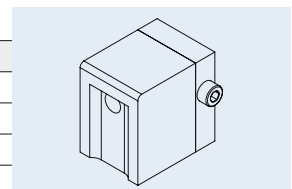
D-0195	5-8
D-0196	10
D-0197	15
D-1221	20



### Overlap seam

#### Order no. seam width (mm)

D-1189	20
D-0192	25
D-0193	30
D-0194	35
D-0599	40
D-1223	45

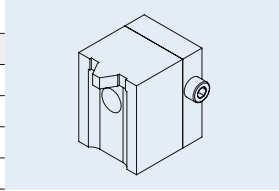


# ACCESSORIES

## Welding shoes types ExOn 2-10/Robot 0,8

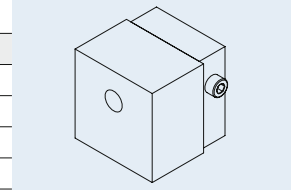
### V-seam

Order no.	sheet thickness (mm)
D-0906	5-6
D-0183	8
D-0184	10
D-0185	12
D-0186	15
D-0187	20
D-0188	25
D-0189	30
D-0190	35
D-0191	40



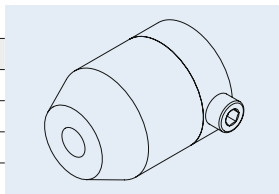
### Unshaped

Order no.	lxw	mm
D-0223	45x30	
D-0224	50x40	
D-0225	45x45	
D-1237	45x50	
D-0247	60x70	
D-0248	70x80	



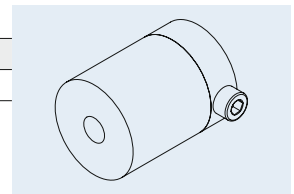
### Round

Order no.	
D-0600	∅ 15 mm
D-0366	∅ 20 mm
D-0337	∅ 25 mm



### Unshaped round

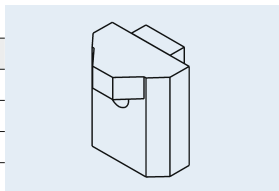
Order no.	
D-0598	∅ 35 mm



## Welding shoes type HS28

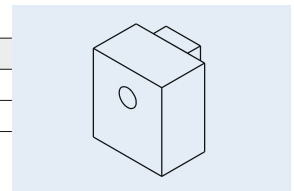
### Fillet seam

Order no.	sheet thickness (mm)
D-1761	30
D-1762	35
D-1763	40



### Unshaped

Order no.	lxw	mm
D-1760	70x60	
D-1543	90x80	





# ACCESSORIES

## Type ExOn 10

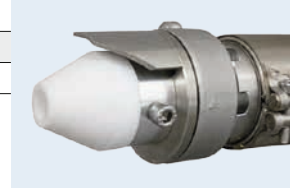
**Order no.**

D-2527 Die with cutting system for mass



**Order no.**

DX355 Revolving head



**Order no.**

D-2528 Pneumatic for cutting system



## Type Robot 0,8

**Order no.**

DX350 Revolving head



## Type ExOn C3

**Order no.**

D-3113 Guiding carriage fillet seam



**Order no.**

D-3112 Clamp balancer



# ACCESSORIES

## Test equipment

### Spark tester

Order no.

5200229 230V



### Welding rod dereeler for 1 roll

Order no.

5118190



### Vacuum pump

Order no.

DX150 230V

DX096 120V



## Vacuum test bells

### Rectangular

Order no.

DX121 740x280x160 mm



### Round

Order no.

5200306 Ø 210 mm

DX122 Ø 360 mm



### Inside edge

Order no.

5200315



### Outside edge

Order no.

5200330



### Inside corner down

Order no.

5200310



### Outside corner down

Order no.

5200320



### Inside corner up

Order no.

5200325



### Outside corner up

Order no.

5200335



# HeatOn-GROUP

— YOUR BEST CHOICE —

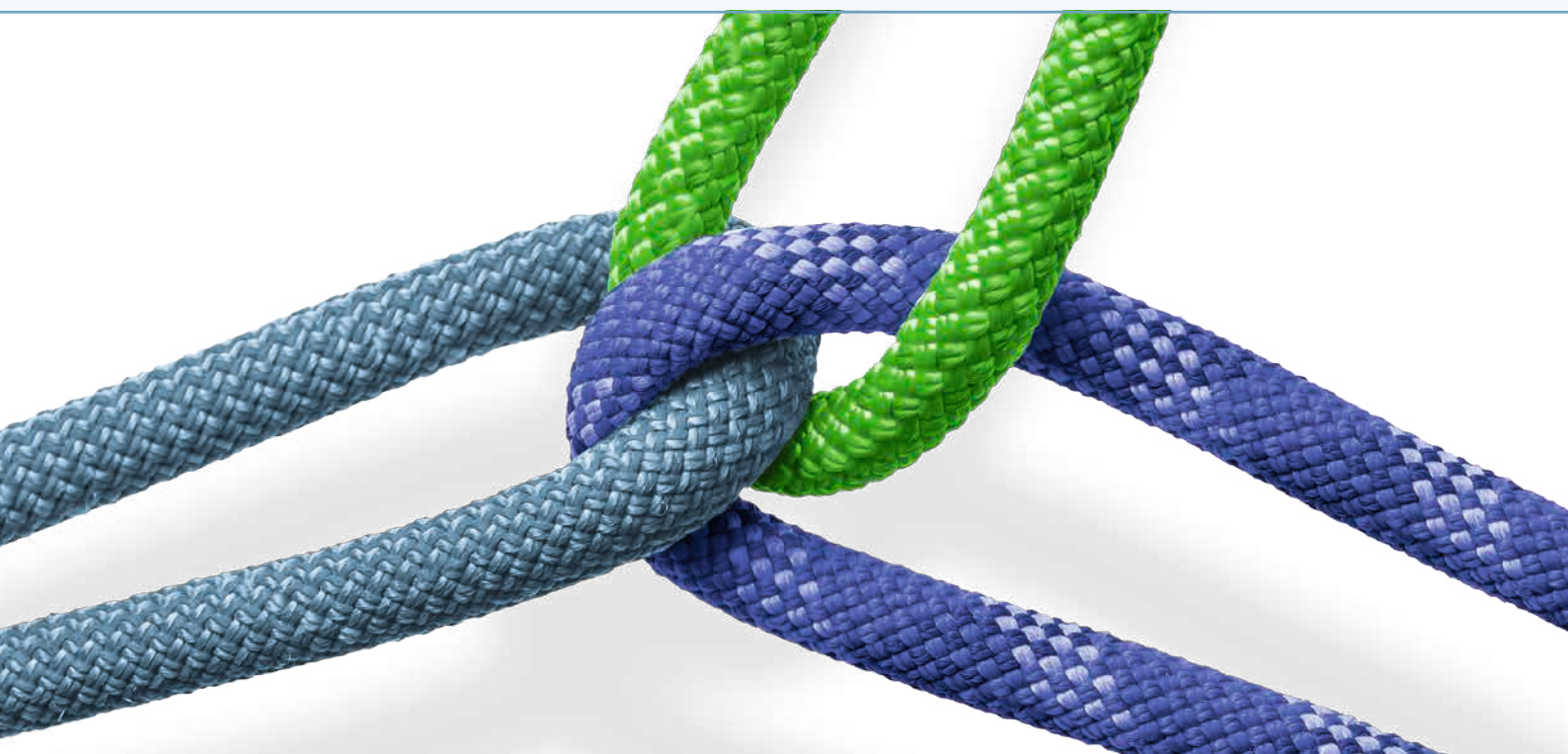
Consulting – Sales – Training – Service – Development

Beratung – Verkauf – Schulung – Service – Entwicklung

**BAK**  
www.bak-ag.com 

**DOHLE**  
www.dohle-extruder.de

**HERZ**  
www.herz-gmbh.com



## **BAK Technology AG**

Industriestrasse 6  
6064 Kerns/Switzerland

Tel. ++41 (0)41 661 22 50, Fax ++41 (0)41 661 22 51  
e-mail [info@bak-ag.com](mailto:info@bak-ag.com)